

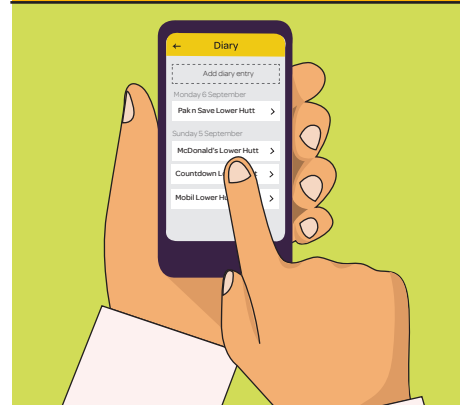
CONTACT TRACING AND KEEPING SAFE

An update from your public health unit

THE NZ COVID TRACER APP HELPS US WITH CONTACT TRACING. IF YOU USE THE APP ALL THE TIME, WHENEVER YOU LEAVE YOUR HOME, IT WILL HELP KEEP YOU SAFE.

WHEN WE RECEIVE A POSITIVE TEST RESULT FROM THE LAB WE CALL THE PERSON AND LET THEM KNOW THEY HAVE COVID-19. WE INTERVIEW THEM TO FIND OUT WHERE THEY HAVE BEEN.

IF THEY HAVE USED THE NZ COVID TRACER APP THEY CAN SEND US THEIR DIARY WITH THE LOCATIONS THEY VISITED RECENTLY.



IF THEY HAVEN'T USED THE APP, WE HAVE TO GO THROUGH DAY BY DAY WHERE THEY WENT AND WHO THEY WERE WITH. THIS RELIES ON THEIR MEMORY AND CAN TAKE SEVERAL PHONE CALLS, DELAYING HOW QUICKLY WE CAN LET OTHERS KNOW.

WHEN PEOPLE USE THE APP IT GIVES US A HEAD START TO IDENTIFY CLOSE CONTACTS AND LOCATIONS OF INTEREST A LOT FASTER.

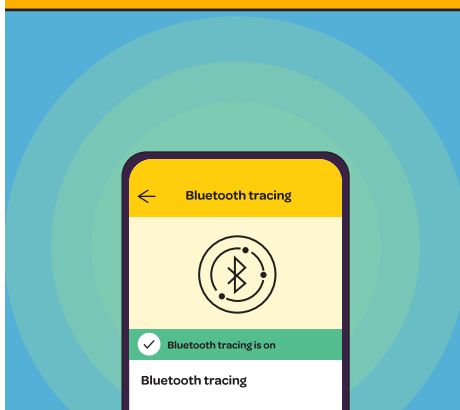
THE QUICKEST WAY TO LET YOU KNOW THAT YOU MAY BE AT RISK OF BEING EXPOSED TO COVID-19, IS BY SENDING AN ALERT TO YOU THROUGH THE NZ COVID TRACER APP.



RECEIVING AN ALERT MEANS YOU HAVE BEEN IN A LOCATION OF INTEREST OR WERE CLOSE TO SOMEONE WHO IS SICK. WE WILL ASK YOU TO ISOLATE, LOOK OUT FOR SYMPTOMS, AND GET A TEST.

REMEMBER TO TURN ON THE BLUETOOTH FUNCTION AND SCAN QR CODES EVERYWHERE YOU GO. THE QUICKER PEOPLE ISOLATE, THE QUICKER WE STOP THE SPREAD OF COVID-19, KEEPING OURSELVES, OUR WHĀNAU AND OUR COMMUNITY SAFE.

Please use the NZ COVID Tracer App everywhere. Everyone aged 12 and over must keep a record of where they have been. Visit [covid19.govt.nz/contact-tracing](https://www.covid19.govt.nz/contact-tracing) for more information.



COVID-19 Contact Tracker Booklets:

Order the Wellington region COVID-19 Contact Tracker booklets at www.rph.org.nz/covidbook

Regional Public Health

HAUORA Ā IWIKI TE ŪPOKO O TE IKA A MĀUI
Better health for the greater Wellington region